

Your Guide

TO POOL MAINTENANCE



Featuring the

MONDAY

WEDNESDAY

FRIDAY

M

W

F

POOL MAINTENANCE PROGRAM



Table of Contents

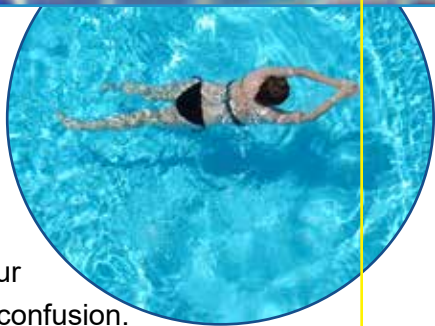
Introduction	3
Basic Pool Care Guidelines.....	4
Pool Opening	5
Pool Maintenance	6
Balancing Pool Water.....	7
Testing Frequency.....	8
M-W-F Maintenance Program.....	9
Troubleshooting	10
Pool Closing	15
Pool Safety.....	16
Chemical Safety.....	17
Notes	18



Introduction

Welcome to **Swim 'n Spa™** line of pool maintenance chemicals. **Swim 'n Spa™** created this maintenance guide to make your pool fun and easy, and to reduce work and confusion.

For crystal clear, hassle-free water, follow the guidelines instructed in this manual from pool opening, through the season, to pool closing. If needed, your **Swim 'n Spa™** dealer will be able to offer professional advice, water testing, and everything you need to complete your backyard experience.



Basic Pool Care Guidelines

1. Filtration

Filtration is the term used to refer to the mechanical cleaning of the water. The filter is a key element in pool water maintenance, as it removes all debris, and keeps the water sparkling clear. When operating properly, the filter will remove dirt and debris by trapping the particles in the filter media. When pressure reaches 8 psi above normal range, the filter will need to be backwashed. Since backwashing only removes debris and dirt, the filter will need to be chemically cleaned to remove oils and other contaminants regularly.

2. Circulation

Circulation refers to the process of moving pool water through the pump and filter system. The pool water must be circulated for your **Swim 'n Spa™** products to work to their full effect. **Swim 'n Spa™** recommends running your filter for a minimum of 10-12 hours a day. With this amount of circulation and motion, water passes through the filter, which collects debris, and helps eliminate bacteria and algae growth.

3. Testing

Regularly testing of pool water helps ensure water clarity and a great looking pool. The most important tests include pH, chlorine sanitizer, and total alkalinity, which should be checked several times a week. Other tests, such as calcium hardness, cyanuric acid, and metals, can be tested by a **Swim 'n Spa™** dealer once a month to be sure water is balanced.



4. Cleaning

Because algae and bacteria can begin to grow in areas of poor circulation, it is important to brush the walls and floor, and vacuum once a week. Brushing is necessary even with an automatic pool cleaner.

Pool Opening

1. Remove Winter Cover

With all solid covers, be sure to drain off all standing water to ensure it does not get into the pool. Sweep off and clean the cover to prevent odors and damage. Place cover in a dry place away from weathering, the sun, and animals.

2. Hook up Equipment

Reassemble the filter and pump systems, and reconnect all hoses.

Reminder: Be sure to connect equipment before filling the pool. Also, be sure to fill the pool before turning equipment on.



3. Fill the Pool

Fill the pool up to the middle of the skimmer opening.

4. Clean Pool Surfaces

Brush walls and floor, and manually vacuum the pool. Use **Swim 'n Spa™ Surface Magic Spray** on liner and stairs to remove the waterline, oil and grease.

5. Test and Balance Water

Take a water sample to your **Swim 'n Spa™ Dealer** to test all levels. Once water tests 1.5 - 3.0 ppm for **Swim 'n Spa™ Sanitizer**, 7.4 - 7.6 for pH, and 125 - 150 ppm for total alkalinity, you are ready to jump in!

6. Add Swim 'n Spa™ Products

Shock your pool with **Swim 'n Spa™ Refresh** to remove waste from the winter. Add **Swim 'n Spa™ AlgaeClear 100** or **Swim 'n Spa™ Algae Buster** to prevent or eliminate algae and to help prevent the build up of stains use **Swim 'n Spa™ First Step**.

Pool Maintenance

Chlorination

There are a variety of **Swim 'n Spa™** chlorine sanitizers including **tablets**, and **concentrate**, which should be added to sanitize your pool. The free **Swim 'n Spa™** chlorine sanitizer level should be maintained between 1.5 and 3.0 ppm

Shock Treatment

Use **Swim 'n Spa™ Refresh** to shock the water weekly. This helps maintain crystal clear water by eliminating contaminants such as lotions, oils, perspiration, and make-up. It is recommended to shock your pool more frequently after heavy rain, hot weather, and when bather load increases heavily.

Algae Prevention

The best way to clear up algae is to prevent it! Use **Swim 'n Spa™ AlgaeClear 100** weekly to eliminate algae growth in your pool.

Clarifiers

To eliminate hazy and dull looking water, use **Swim 'n Spa™ Sparkle Plus** once a week in your pool.



Balancing Pool Water

pH

pH is the most important factor in balancing pool water. Ideal pH range is between 7.4 and 7.6. With low pH, acidic water, add **Swim 'n Spa™ pH Plus**. With high pH, basic water, add **Swim 'n Spa™ pH Minus**.

Total Alkalinity

Total alkalinity is what manages or controls pH in the pool. Ideal range for total alkalinity is between 125 and 150 ppm. When total alkalinity is in ideal range, it serves as a buffer so the pH does not dramatically swing up or down. If total alkalinity is low, add **Swim 'n Spa™ Total Alkalinity Increaser**. To decrease the alkalinity, add **Swim 'n Spa™ pH Minus** in minimal portions over an extended period of time, and maintain an ideal pH range of 7.4 – 7.6.

Calcium Hardness

The calcium hardness in your pool should range between 180 and 225 ppm. If calcium level is above 500 ppm, drain some water, and add fresh water. If calcium level is low, add **Swim 'n Spa™ Hardness Plus** or **Swim 'n Spa™ Calcium Hardness Increaser**.

Metals/Phosphates/Scaling

When filling your pool or adding water, it is important to have your **Swim 'n Spa™** dealer test a sample of the pool to check for a trace of metals including iron, copper, manganese, phosphate and calcium hardness levels. It is important to use **Swim 'n Spa™ First Step** as soon as possible to eliminate any possibility of staining or calcium build up on pool surfaces. Follow up with **Swim 'n Spa™ Protect** weekly.

Cyanuric Acid

Swim 'n Spa™ Stabilizer & Conditioner is a product that contains cyanuric acid. It helps stabilize the **Swim 'n Spa™** chlorine sanitizer and helps protect from sun burn off. The cyanuric acid level in your pool should be 40 ppm. If cyanuric acid is low, add **Swim 'n Spa™ Stabilizer & Conditioner**. If cyanuric acid level reaches 150 ppm or above, drain some water and add fresh water.



Testing Frequency

To prevent problems with your pool, and to keep the sparkling clarity of your water, test your water accordingly and balance if needed.

- Chlorine Sanitizer** Test three times a week
- pH** Test three times a week
- Total Alkalinity** Test three times a week
- Calcium Hardness** Test Monthly
- Phosphate/Metals** Test Monthly
- Cyanuric Acid** Test Monthly



MONDAY

M

WEDNESDAY

W

FRIDAY

F

POOL MAINTENANCE PROGRAM

MONDAY

Test pH and alkalinity. Adjust with **Swim 'n Spa™ pH Plus**, **Swim 'n Spa™ pH Minus**, or **Swim 'n Spa™ Total Alkalinity Increaser** if needed. Test **Swim 'n Spa™** chlorine sanitizer. Add if needed. Add 1 oz. per 5,000 gallons of **Swim 'n Spa™ Sparkle Plus**. Add 1 lb. of **Swim 'n Spa™ Refresh** per 10,000 gallons of water. After heavy weekend usage we recommend shocking the pool. Make sure the chlorine level is 1.5-to-3 ppm before re-entering the pool.

MONDAY

M

WEDNESDAY

Test pH and alkalinity. Adjust with **Swim 'n Spa™ pH Plus**, **pH Minus**, or **Total Alkalinity Increaser** if needed. Test **Swim 'N Spa™** chlorine sanitizer. Add if needed. Add 4 oz. of **AlgaeClear 100** per 10,000 gallons of water.

WEDNESDAY

W

FRIDAY

Test pH and alkalinity. Adjust with **Swim 'n Spa™ pH Plus**, **pH Minus** or **Total Alkalinity Increaser** if needed. Test **Swim 'N Spa™** chlorine sanitizer. Add if needed. Add 1 oz. of **Swim 'n Spa™ Protect** per 5,000 gallons of water, and add 3 oz. of **Swim 'n Spa™ Phos B-Gone** per 10,000 gallons of water.

FRIDAY

F

Troubleshooting

Cloudy Water:

Problem: Cloudy water, water lacks sparkle, cannot see the floor, and appears dull.

Solution: Cloudiness can occur with low circulation. The pump should be circulating at least 12 hours a day, during sunlight. Be sure to check your sanitizer levels and adjust if necessary. You can use **Swim 'n Spa™ Sparkle Plus** to speed the process.

Problem: **Swim 'n Spa™** chlorine sanitizer level is lower than 1.5 ppm.

Solution: Increase amount of **Swim 'n Spa™** concentrate or tablets.

Problem: Dull-looking water caused by organic contamination.

Solution: Use **Swim 'n Spa™ Refresh** to oxidize water.

Problem: Difficulty in maintaining 1.5 – 3.0 ppm free **Swim 'n Spa™** chlorine sanitizer residual.

Solution: Increase amount of **Swim 'n Spa™** chlorine sanitizer concentrate or tablets. Maintain a level of **Swim 'n Spa™ Stabilizer & Conditioner** at 40 ppm.

Problem: High pH (level above 7.6) and high level of total alkalinity (level over 200 ppm).

Solution: Adjust pH to 7.4 – 7.6 (ideal range) with **Swim 'n Spa™ pH Minus**.

Problem: Early stages of algae developing. Can feel slime on walls and floor, or see black spots or mustard algae in areas of poor circulation.

Solution: Refer to algae portion of guide on page 12.

Problem: Weak flow from return eyeballs, frequently backwashing, low surface activity.

Solution: Filter should be cleaned seasonally to remove oil and dirt buildup. Use **Swim 'n Spa™ Filter Renew**.

Troubleshooting

Cloudy Water (continued)

Problem: High levels of total dissolved solids (TDS) or calcium hardness.

Solution: Take a water sample to your **Swim 'n Spa™** dealer. You may need to drain a portion of the pool to reduce TDS levels.

Swim 'n Spa™ Chlorine Sanitizer Demand

Problem: Addition of **Swim 'n Spa™** chlorine sanitizer fails to raise the sanitizer level in the pool. Tests show low to zero **Swim 'n Spa™** chlorine residual.

Solution: Be sure filter system is running for a minimum of 12 hours a day. Test reagents for freshness and certainty that they are not spoiled. Check **Swim 'n Spa™** chlorine sanitizer in skimmer, floater, or chlorinator tube is free from obstructions.

Problem: Improper chemical balance.

Solution: Take a water sample to your **Swim 'n Spa™** dealer.

Problem: Algae Presence.

Solution: Algae growth will consume a drastic amount of **Swim 'n Spa™** chlorine sanitizer. Refer to the algae portion of the guide.



Troubleshooting

Scaling

Problem: Rough, sandpaper-like deposits on the pool surface. Scale may also be built up on plumbing, pump and heater. This in turn could damage the equipment, create a loss of heater efficiency, or clog the equipment.

Solution: Adjust the pH to ideal level between 7.4 and 7.6. Have the water tested by your **Swim 'n Spa™** dealer to ensure proper calcium hardness and total alkalinity levels. Use of **Swim 'n Spa™ Protect** will help eliminate the scaling, and will help reduce scales forming from “hard” water, or well water.

Algae

Problem: Green algae begins growing on walls, floor, and floating on the top of the water. As well as spreads quickly especially in direct sunlight.

Solution: Use **Swim 'n Spa™ Algae Buster** according to directions on the bottle.

Problem: Black or spot algae appears in small portions on the pool's surface, then rapidly grows to larger areas including walls and floor.

Solution: Brush areas forcefully and use **Swim 'n Spa™ Algae Buster** according to directions on the bottle.

Problem: Mustard algae forming in dark areas of poor circulation is easily brushed away, then quickly returns.

Solution: Brush area forcefully and use **Swim 'n Spa™ Algae Buster** according to directions on the bottle.

Pink Slime

Problem: Also referred to as pink or red slime, this bacteria is brushed away and quickly returns where it collects around ladders, skimmers, lights, pool walls at the water line, steps and plastic surfaces.

Solution: Brush areas thoroughly to remove slime, and apply **Swim 'n Spa™ Refresh**.

Troubleshooting

Colored Water

Problem: Water is clear, but has a green, red, or brown tint.

Solution: The discoloration of the water is usually caused by a trace of metals in the pool. Refer to the stains and metals portion of the guide. Take a sample to your **Swim 'n Spa™** dealer for instructions.

Problem: Water has a greenish tint, and is cloudy.

Solution: This is green algae, Refer to the algae portion of the guide.

Stains & Metals

Problem: Discolored stains appear on pool surfaces. They may be green, blue, gray, brown, red-brown, or beige.

Solution: These stains are not easily removed by brushing off. They will need to be removed with a combination of **Swim 'n Spa™ Protect** and **Swim 'n Spa™ Surface Magic**.

Problem: Reddish to yellowish brown stains.

Solution: Stains caused by iron. These stains are not easily removed by brushing off. They will need to be removed with a combination of **Swim 'N Spa™ Protect** and **Swim 'N Spa™ Surface Magic**.

Problem: Gray, green, purple, or blue stains.

Solution: Stains caused by copper or iron. These stains are not easily removed by brushing off. They will need to be removed with a combination of **Swim 'n Spa™ Protect** and **Swim 'n Spa™ Surface Magic**.

Problem: Medium to dark brown stains.

Solution: Stains caused by manganese, very uncommon. These stains are not easily removed by brushing off. They will need to be removed with a combination of **Swim 'n Spa™ Protect** and **Swim 'n Spa™ Surface Magic**.



Troubleshooting

Stains & Metals (continued)

Problem: Tan or beige stains on plaster or marcite finishes.

Solution: This is calcium or silicate scale build up. Dirt gets trapped in the scale crystals as they form, and cause the discoloration. They will need to be removed with a combination of **Swim 'n Spa™ Protect** and **Swim 'n Spa™ Surface Magic**.

Foaming

Problem: Accumulation of foam in the corners, and bubbles that remain on the pool's surface for more than a few seconds.

Solution: To destroy contaminants and waste in the pool water, use **Swim 'n Spa™ Refresh**. Use **Swim 'n Spa™ AlgaeClear 100** according to measurements on directions. Use **Swim 'n Spa™ Surface Magic** when cleaning the walls and tiles of the pool. Do not use detergents or soaps. When washing deck area, be sure to rinse properly so cleaning solutions do not get into the pool water.



Pool Closing

Step One

Balance the water by testing the pH, alkalinity, calcium hardness, and adjust as needed. Circulate the water for at least 12 hours.

Step Two

Be sure to clean up all debris in the pool. Vacuum and sweep the walls and floor. Clean out the skimmer and pump baskets.

Step Three

Make sure your pool levels are at 5 ppm then stop chlorination 24-hours prior to winterizing your pool.

Step Four

Add the **Swim 'n Spa™ Winter Closing Kit**. There are two kit types: one for 15,000 gallon pools, one for 30,000 gallon pools. They each contain **Last Step**, a specially formulated **Winter Klear**, and **Winter Refresh** that lasts all winter long. After adding the contents of your kit according to the instructions (included in the box), circulate the water for at least 12 hours.

Step Five

Now that the pool is ready, contact your **Swim 'n Spa™** dealer for proper shut down of equipment and pool.



Pool Safety

- ▶ Never mix swimming with alcohol; it is a dangerous combination.
- ▶ Always supervise children and guests who cannot swim, in or near the pool.
- ▶ Keep glassware away from the pool.
- ▶ Never dive into the shallow end or areas marked “No Diving.”
- ▶ Clearly mark water’s depth to prevent accidents.
- ▶ Keep area around the pool clear of debris.
- ▶ Practice safe use of diving board, slide, and toys.
- ▶ Keep a safety hook and a U.S. Coast Guard approved life preserver near the pool area in case of emergencies.



Chemical Safety

Keep all products out of the reach of children. Always keep an eye on where any children and pets are in relation to product containers.

Handle all products carefully.

Do not inhale fumes or allow products to contact eyes, ears, nose, or mouth.

Only use products specifically recommended for chlorinators.

Never mix chemical products together. Always add product into sufficient water. Never add water to products. Gassing or explosion may occur.

Do not smoke while handling products.

Store all products in a dry, well-ventilated area with the lids securely fastened. Never store in direct sunlight. Never store products near a heat source or an open flame. Never store sanitizers next to pool equipment. Do not store liquid products above dry products. Do not store pool products and garden products (such as fertilizers, insecticides, etc.) in the same area.

Read and follow all label directions. Do not exceed directed amount. This is a costly and can be harmful to swimmers as well as your pool and equipment.

Use clean, dry, plastic cups or scoops in products requiring measuring utensils. Do not put wet scoop back in container.

Be familiar with first aid instructions on all product containers. Have emergency medical and poison control center phone numbers handy at all times.

Keep products away from grass and landscaping. Product spills should be handled immediately per labeled instructions.

DISCLAIMER

This product catalog is intended to help owners of swimming pools keep them clean, sanitized, and safe for swimmers. The guidelines herein are not intended for application to commercial pools.

Pool conditions, bather variations, and bather load will vary; accordingly, **Swim 'n Spa™** and **QCA Spas, Inc.** do not warrant results and cannot be liable for personal injury or damage to pool surface, concrete, metal, or equipment as a result of improper use of **Swim 'n Spa™** chemicals. **Swim 'n Spa™** and **QCA Spas, Inc.** will not be responsible of incidental or consequential damages or losses arising from any cause (e.g. water or chemical damage to carpet, floors, walls, ceilings, loss of use, etc). **Swim 'n Spa™** and **QCA Spas, Inc.** reserve the right to change product catalog, maintenance guide, and formulations, including the recommended guidelines without notice to the consumer. ***For the latest product information and recommendations, see our website at www.qcaspas.com.***



1021 State Street | Bettendorf, IA 52722
(888) 729-7727 | retail@qcaspas.com | www.qcaspas.com

All Rights Reserved, QCA Spas 2018